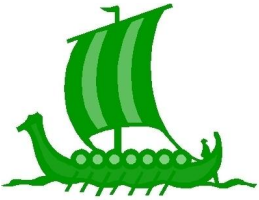


Wittersham Church of England Primary School

'On a voyage of discovery: learning and growing together in the light of God'



Welcome to the Wittersham Weekly! Friday 5th September 2025



Wittersham Weekly – Term 1, Week 2

Goodness me, the second week has already come to a close – and what a wonderful week it has been!

It has been such a joy to welcome our new Reception children, who officially joined us this week. They have been incredible! Of course, there have been a few tears at drop-off as the novelty of the first few days wore off, but those tears have quickly dried as the children settled into their classroom and outdoor adventures. They've already adapted brilliantly to lunchtimes and devoured their first Fishy Friday – a sure sign of a good week all round!

We were also delighted to announce our new Head Students during Celebration Worship. Archie and Aiya were voted into these roles after delivering powerful speeches to the whole school last week. Joining them are Lily and Theo, who will take on the positions of Deputy Lead Students. I am so excited to see how this team will use their courage, compassion and cooperation to lead the pupil body this year.

Another exciting development is our brand-new fish tank – though at 400 litres, calling it an aquarium feels more accurate! This was set up by the fantastic aquatic expert, Mr Bull, and we are truly grateful to our parent community for their support in making this possible. Next week, the children will have the chance to help select their class fish, which will be such a fun and memorable experience.

A huge thank you also goes to Mr Last, one of our Wittersham School Heroes, who kindly gave up time over the summer to replace key equipment in our trim trail. Thanks to him, it is now fully up and running again – and being very well used already!

On the next page, you will find an introduction to all our staff for this academic year. Mrs Sutters has stepped away from her wraparound care role, which we will be covering in-house this term. I am pleased to say that our new staff have already settled in brilliantly – the energy, purpose and enthusiasm in school over the past fortnight has been infectious.

As we move forward, if you have any concerns, we ask that you speak with your child's class teacher at the end of the day or contact them via Class Dojo. Please note that messages and emails are checked between 8am and 6pm, Monday to Friday; any messages received after this time will be responded to the following working day.

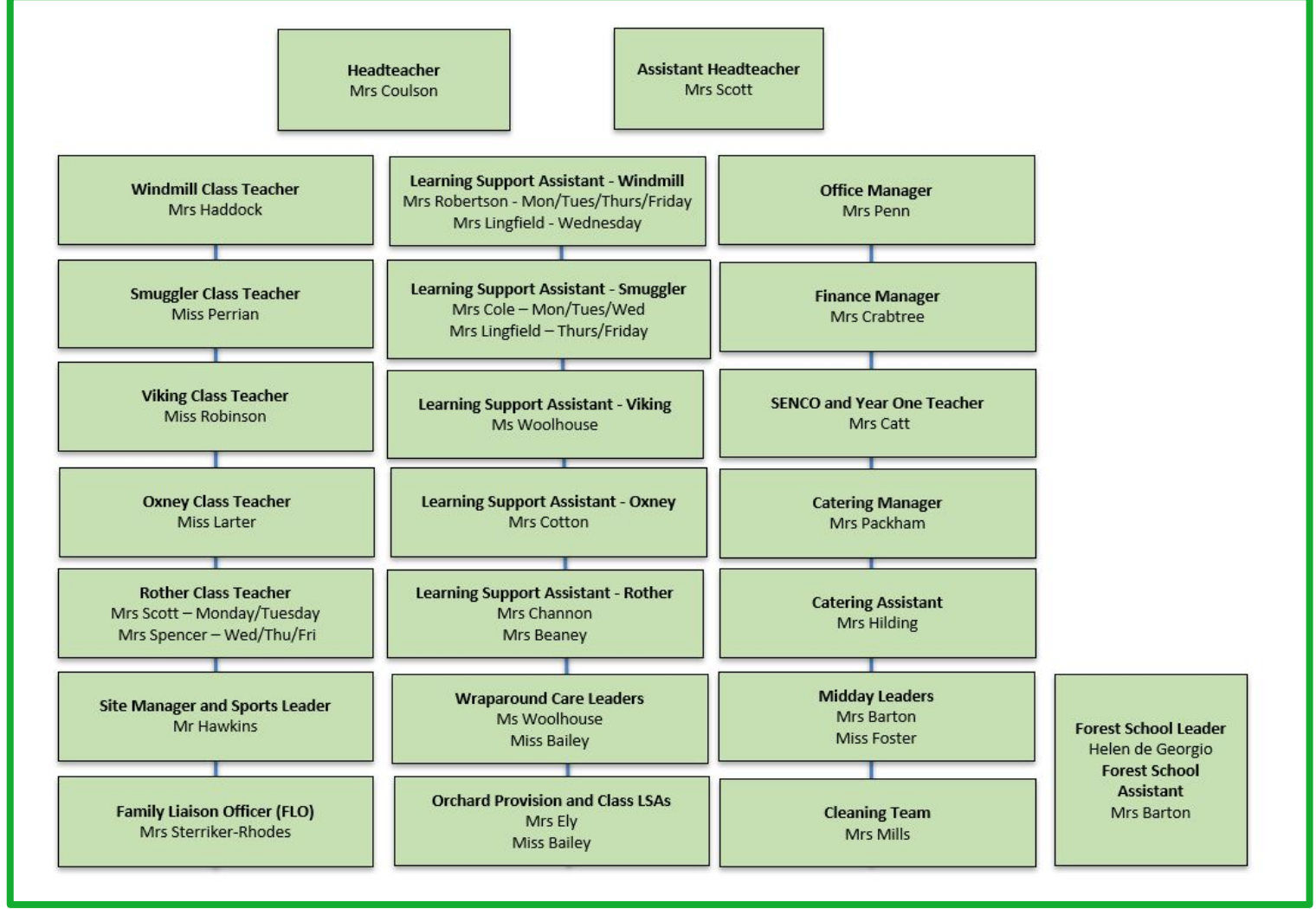
I would also like to remind families that Mrs Catt is now our SENCO, so please reach out to her if you have any SEND-related queries. Our FLO, Mrs Sterriker-Rhodes, is available to support with family concerns, and both Mrs Scott (Assistant Headteacher) and I will continue to be on the gate throughout the week should you need us.

I have a feeling this is going to be our best year yet at Wittersham. Thank you, as always, for your support and partnership. Wishing you all a safe and enjoyable weekend. Mrs Coulson.

Compassion

Courage

Cooperation



Here at Wittersham Church of England Primary School, we strive to **cooperate** and work alongside all members of our community to feel valued, nurtured, and empowered as they embark upon their journey to become the very best that God intended.

Throughout their voyage of discovery with us, we ensure all children are provided with a rich curriculum, and experiences that promote **courage** and a strong moral purpose underpinned by our Christian values; preparing them to become **compassionate** citizens within our rural community and the wider world.

Cooperation **Courage** **Compassion**

At Wittersham, our whole school vision matters because it gives us a clear sense of direction and purpose as a community of children, staff and parents. It brings our values, goals and aspirations together, shaping every part of school life and ensuring we are all working towards the same aims. Our vision motivates and inspires us, while also helping us to stay focused on long-term growth through times of challenge and change. By involving everyone, it builds a strong sense of belonging and shared responsibility. Most importantly, our vision shapes the culture of our school—how we treat one another, and the positive and nurturing learning environment we create for every child.

Compassion

Courage

Cooperation



A Prayer for the New School Year

Loving God,
We thank you for bringing us safely to the start of this new school year at Wittersham.
Bless our children as they learn, play and grow together.
Bless our staff as they guide and nurture each child with courage, compassion and cooperation.
Bless our families and community, who support and encourage us each day.
May our school be a place of kindness, joy and discovery.
Help us to face challenges with courage,
to care for one another with compassion,
and to work together in cooperation,
so that everyone can flourish and shine as you intended.

Amen.

Attendance and Punctuality

At Wittersham Church of England Primary School, we are committed to supporting every child's learning and development. Regular attendance and punctuality are essential in helping children make the most of their time in school and achieve their full potential.

The school gate closes at 8:45am. Any child arriving after this time will need to sign in at the office, and this will be recorded as late. Being consistently late not only disrupts learning for the child but also for the class as a whole. Over the coming weeks, we will be arranging meetings with families of pupils who are persistently late to explore ways we can work together to improve punctuality.

Remember, our Breakfast Club runs from 8:00am and is a great way to ensure children arrive on time and are settled, ready for the day ahead.

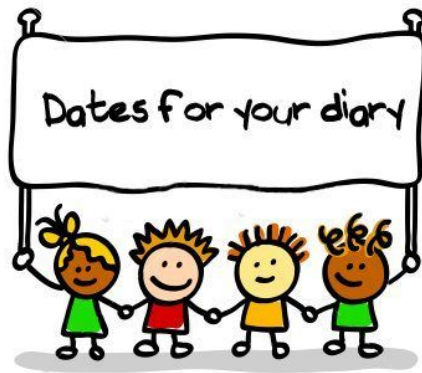
We do understand that challenges can sometimes make regular attendance or punctuality difficult. If you are experiencing difficulties, please don't hesitate to reach out. Our School Family Liaison Officer, Mrs Sterriker-Rhodes, is available to offer support and guidance to help overcome any barriers.

Together, we can make sure every child has the very best start to each school day.

Compassion

Courage

Cooperation



Upcoming Dates for Your Diary

- **Thursday 16th October** - Last day of Term 1
- **Friday 17th October** - INSET Day (School Closed for Pupils)
- **Monday 20th - Friday 31st October** - Half Term.
- **Monday 3rd November** - Start of Term 2

 *Please mark these dates in your calendars as we look forward to a busy and exciting term ahead!*



Free school meals

Your child might be able to get free school meals if you get any of the following:

- Universal Credit - your household income must be less than £7,400 a year (after tax and not including any benefits you get)
- Income Support
- Income-based Jobseeker's Allowance
- Income-related Employment and Support Allowance
- Support under Part VI of the Immigration and Asylum Act 1999
- The guaranteed element of Pension Credit
- Child Tax Credit (provided you're not also entitled to Working Tax Credit and have an annual gross income of no more than £16,190)
- Working Tax Credit run-on paid for 4 weeks after you stop qualifying for Working Tax Credit.



Some schools in Kent manage their own Free Schools Meals application process. For more information, go to:

kent.gov.uk/freeschoolmeals



Local events and news!



THE MUSIC WELL IN RYE,
IS PROUD TO ANNOUNCE:



A fabulous CHILDREN/STUDENT'S SINGING CLUB

Taking place at the HUB on RYE HILL
on MONDAYS, 4-5pm, term-time.



OPEN to ALL Children and Students in Years R – Y11,
attending any local schools in the Rye area and beyond, or
being home schooled.

*This is an exciting musical opportunity for children and young people, and is
fun, friendly and fully inclusive. Everyone is welcome.*



Singing Teacher is Mrs. Marian Ham, a local music and piano teacher,
and a semi-retired Primary School Head Teacher.

For a joining form and more information, please email
Marian on dmham128@btinternet.com

This opportunity is supported financially The Music Well CIC as well as
welcoming donations wherever possible.

Enjoy viewing the Music Well's website: www.themusicwell.org.uk