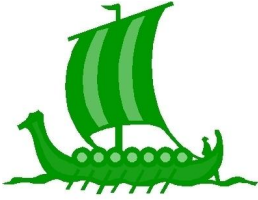


# Wittersham Church of England Primary School

'On a voyage of discovery: learning and growing together in the light of God'



Welcome to the  
Wittersham Weekly!  
Friday 28th November 2025



## Wittersham Weekly – Term 2, Week 4

As we head into December and the most exciting month of the year, I can hardly believe how quickly not only this calendar year has flown by, but also how much we have achieved together already this academic year. The next few weeks of Term 2 are wonderfully busy, so please do keep an eye on the diary dates below.

We begin our Christmas celebrations with the whole-school pantomime on Tuesday 2nd December, kindly funded by our brilliant WSA. This year's performance is *Dick Whittington* and will be a fantastic way to begin the festive season.

This week, Mr Hawkins took a team of children to the KS1 Multi Skills event, where our pupils represented Wittersham beautifully. A number of our KS2 children also supported the younger teams by helping to lead activities. They demonstrated fantastic cooperation, confidence and impeccable behaviour, showcasing the Wittersham Way throughout.

We were also delighted to welcome Andrea, our SALT therapist, who spent the day working with staff across the school. She led focused sessions with our support staff to develop their SALT and Makaton skills further, helping us to ensure we are continuing to meet the needs of all learners effectively.

Since the start of the academic year, Mrs Catt – who has taken on the role of SENCo – has introduced the use of Makaton across the school, and it has been wonderful to see both staff and children embracing this. Andrea's visit helped to build on this work so we can continue to strengthen our communication-friendly practice.

Since the start of Term 2, we have also introduced a "sign of the week", and the children have really enjoyed learning and using Makaton around the school. Here are the simple signs we have learned so far:

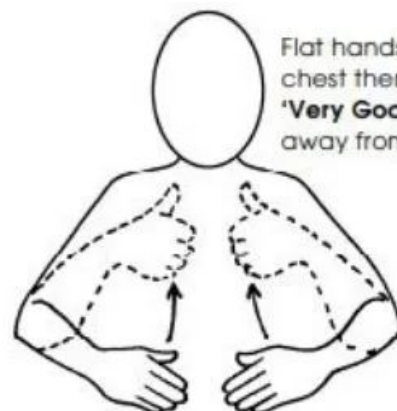


good

+



morning



How Are You?

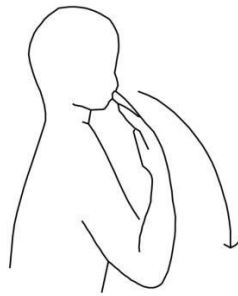
Flat hands move up chest then make 'Very Good' sign away from body

Compassion

Courage

Cooperation

# Makaton Sign of the Week



Please



Thank you

The children have loved using these signs, and I am sure they will be excited to share them with you at home. Each new sign will continue to appear in the Wittersham Weekly as we strengthen our communication-friendly school ethos.

We continue to work closely as a team with our Governing Board, as this partnership is vital in supporting the school's ongoing development. Our governors play an important role in offering challenge, guidance and support, and we are always keen to welcome them into school so they can see the learning, culture and day-to-day life of Wittersham first-hand. This helps them make well-informed decisions that truly reflect the needs of our children and community.

This week, we were delighted to welcome Jane Burnett, one of our Governors, to the teaching staff meeting. She spent time listening to subject leaders as they shared their action plans and curriculum developments, and it was inspiring to hear our middle leaders speak with such confidence, passion and clarity about their subjects and their ongoing plans for improvement. Opportunities like this strengthen our partnership with the Governing Board and ensure they have a clear understanding of the excellent work happening across the school.

You will also have seen that the Parent Governor letter went out this week as we begin the process of appointing new parent governors to join our team. If you have any questions about the role or would like to know more, please do come and speak with me. I am really looking forward to seeing the nominations we receive and to welcoming new members who will play a valuable part in shaping the future of our school.

Wishing you all a wonderful weekend, and I look forward to seeing everyone on Monday as we welcome December.

Take care



Mrs Coulson

**Compassion**

**Courage**

**Cooperation**

# PRAYER

## Whole-School Prayer

As we leave November and move into December, we take a moment to pause and pray.

Dear God,

Thank you for guiding us through another month of learning, friendship and growth. As we enter December, the final month of the calendar year, help us to carry forward kindness, patience and hope in all that we do. Bless our school community with peace and joy, and help us to look after one another during this busy season.

May we approach each new day with courage, cooperation and compassion, living out our school values in all we say and do.

Amen.



## Attendance and Punctuality

At Wittersham Church of England Primary School, regular attendance and punctuality are vital in helping children learn well and feel secure in their daily routines.

The school gate closes at 8:45am. Children arriving after this time must sign in at the office, and this will be recorded as a late arrival. Persistent lateness affects your child's learning and also disrupts the start of the day for the whole class.

Over the coming weeks, we will be arranging meetings with families of pupils who are regularly late so that we can work together to improve punctuality. Please also look out for your attendance and punctuality letter, which will be sent to all families next week. This will be emailed to the address provided when your child joined the school.

We have recently seen our attendance drop below 94 percent for the first time this year, which is concerning. Every day in school makes a real difference.

If you are experiencing any difficulties, please get in touch. Our School Family Liaison Officer, Mrs Sterriker-Rhodes, is available to support families and help address any barriers.

By working together, we can ensure every child has the best possible start to each school day

Windmills	Smugglers	Vikings	Oxney	Rother
94%	95%	93%	92%	95%

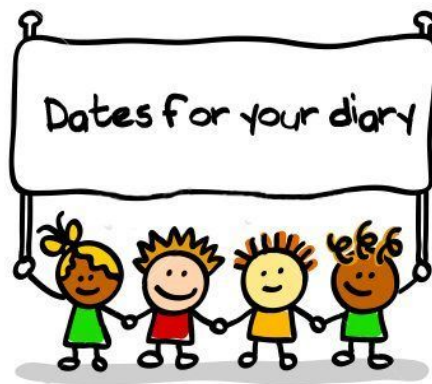
Whole school: **93.6% - this is our second week below 94%**

Whole School Target: **96%**

**Compassion**


**Courage**

**Cooperation**



## Upcoming Dates for Your Diary

- **Tuesday 2nd December** - Whole School Pantomime in school
- **Friday 5th December** - WSA Christmas Craft Event
- **Tuesday 9th December** - EYFS and KS1 Nativity @13:30 (ticket info to follow)
- **Wednesday 10th December** - EYFS and KS1 Nativity @9:30(ticket info to follow)
- **Wednesday 10th December** - EYFS and KS1 Nativity @4:30pm(ticket info to follow)
- **Thursday 11th December** - Christmas Jumper Day
- **Thursday 11th December** - WSA Christmas Movie Event
- **Friday 12th December** - Rock Steady Christmas Concert
- **Tuesday 16th December** - Whole School Christmas Lunch
- **Tuesday 16th December** - KS2 (but all are welcome) Christingle Event at the Church @5pm
- **Friday 19th December** - Final day of Term 2 - Christmas Outfits welcomed!
- **Monday 5th January 2026** - INSET Day - School closed
- **Tuesday 6th January 2026** - First Day of Term 3

 Please mark these dates in your calendars as we look forward to a busy and exciting term ahead!



# Free school meals

Your child might be able to get free school meals if you get any of the following:

- Universal Credit - your household income must be less than £7,400 a year (after tax and not including any benefits you get)
- Income Support
- Income-based Jobseeker's Allowance
- Income-related Employment and Support Allowance
- Support under Part VI of the Immigration and Asylum Act 1999
- The guaranteed element of Pension Credit
- Child Tax Credit (provided you're not also entitled to Working Tax Credit and have an annual gross income of no more than £16,190)
- Working Tax Credit run-on paid for 4 weeks after you stop qualifying for Working Tax Credit.



Some schools in Kent manage their own Free Schools Meals application process. For more information, go to:

[kent.gov.uk/freeschoolmeals](https://kent.gov.uk/freeschoolmeals)



# E-scooters – are you breaking the law?



**Can I ride my e-scooter to school or work?**

**No, it's Illegal...**

E-scooters are classed as motor vehicles and are required to be taxed and insured. It's not possible to get insurance for privately owned e-scooters, which means it's illegal to use them.

**Can I ride my e-scooter on the pavement?**

**No, it's Illegal...**

You cannot use e-scooters on public footpaths, cycle lanes or roads.

**What happens if I'm caught using my e-scooter in public spaces?**

**The scooter may be seized and as a result, destroyed.**

If stopped by an officer, you may be asked to complete a breath and drugs test. You also risk a £300 fine and six penalty points on your licence for no insurance.



**Kent  
Police**

## **Think before you buy:**

The number of electrical scooters being used on our streets has risen, as well as reports of serious injury and fatalities.

For more information and advice on the use of e-scooters visit [www.kent.police.uk/road-safety](http://www.kent.police.uk/road-safety)

THE 2025 PANTOMIME!  
RYE PLAYERS PRESENTS...

# CRAZY CHRISTMAS HAUNTED HOTEL

*at the*



12-14 DECEMBER

AT THE RYE THEATRE

PANTO TICKET HOTLINE

[TICKETSOURCE.CO.UK/RYE-PLAYERS](http://TICKETSOURCE.CO.UK/RYE-PLAYERS)

**NODA**  
For every stage

# KATE'S



NOW ENROLLING  
LIMITED SPACES  
AVAILABLE!

## Swimming

### Why Choose Us?

QUALIFIED, FRIENDLY  
INSTRUCTOR  
CERTIFIED BY STA  
PROGRAMS FROM BABY TO  
ADULTS  
SMALL CLASSES  
HEATED INDOOR POOLS

### Our Programs:

BABY & TODDLER (4 WEEKS  
TO 4 YEARS)  
JUNIOR (PRIMARY SCHOOL  
AGE)  
1:1/2:1 LESSONS  
INTENSIVE COURSES  
DIVING AND TUMBLE TURN  
CLINIC  
FAMILY FUN SWIMS



[www.katesswimming.co.uk](http://www.katesswimming.co.uk)